



Rainbow Printing & Leader Label Co.,Ltd.





30+ YEARS EXPERIENCE

- Rainbow Printing
- Leader Label

CUSTOMER



INSPECTION

- QC Incoming
- In Process QC



2 PLANTS

- **Nawamin**
 - Rainbow Printing (Head Office)
 - Leader Label
- **Chachoengsao**
 - Rainbow Printing (Manufacturing Plant)



CERTIFICATE

- ISO 9001
- ISO 14001
- CODEX GMP

SERVICES

- Paper box
- Sticker Label
- Other

Executive Summary

MACHINES

- **Nawamin**
 - Rainbow Printing (Head Office)
 - 2** Offet Maximum Size : 28 x 40 inch
 > Marketing & Sales Front Office
 - **Leader Label**
 - Maximum Size : 260 x 460 , 310 x 350 , 810 mm.
 - > All Printing Systems and Lines
 - > Marketing & Sales Front Office
- **Chachoengsao**
 - Rainbow Printing (Manufacturing Plants)
 - 5** Offet Maximum Size : 41 x 56 inch
 Flexo Maximum Size : 900 x 1900 mm.

PAPER BOX

- Offset & Flexo Corrugated Box
- Offset Folding Box
- Stand / Shelves
- Partition



STICKER LABEL



OTHER

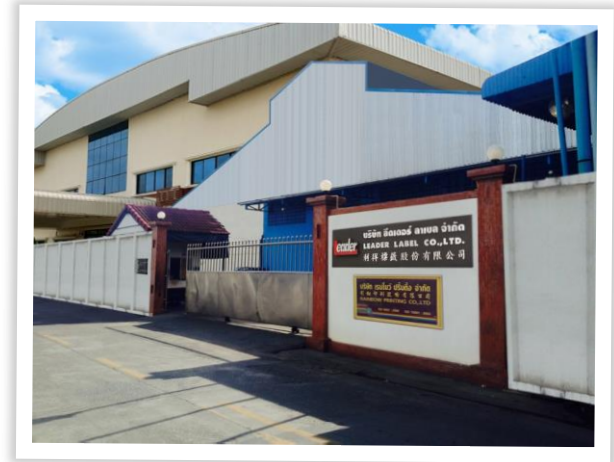
- Tag
- Cigarette Soft Pack
- Luggage Tag
- Wet Tissue Cover





I. Navamin (3,500m²)

- **Rainbow Printing (Head Office)**
 - 2 Printing Lines
 - Maximum Size : 28 x 40 inch (CUT2)
 - Marketing & Sales Front Office
- **Leader Label**
 - All Printing Systems and Lines
 - Marketing & Sales Front Office



II. Chachoengsao (48,000m²)

- **Rainbow Printing (Manufacturing Plants)**
 - 4 Printing Machines
 - Maximum Size : 41 x 56 inch



Mission / Vision

Summary



Pre-Press

Press

Post-Press

QA

SKU



Rainbow Printing Vision

Your Packaging Answer

ตอบโจทย์บรรจุภัณฑ์ของคุณ



Leader Label Vision

Our Ideal Label

ฉลากถูกใจของเรา

Ideal Quality, On Time Delivery, and Intimate Service

Org. Chart

Summary



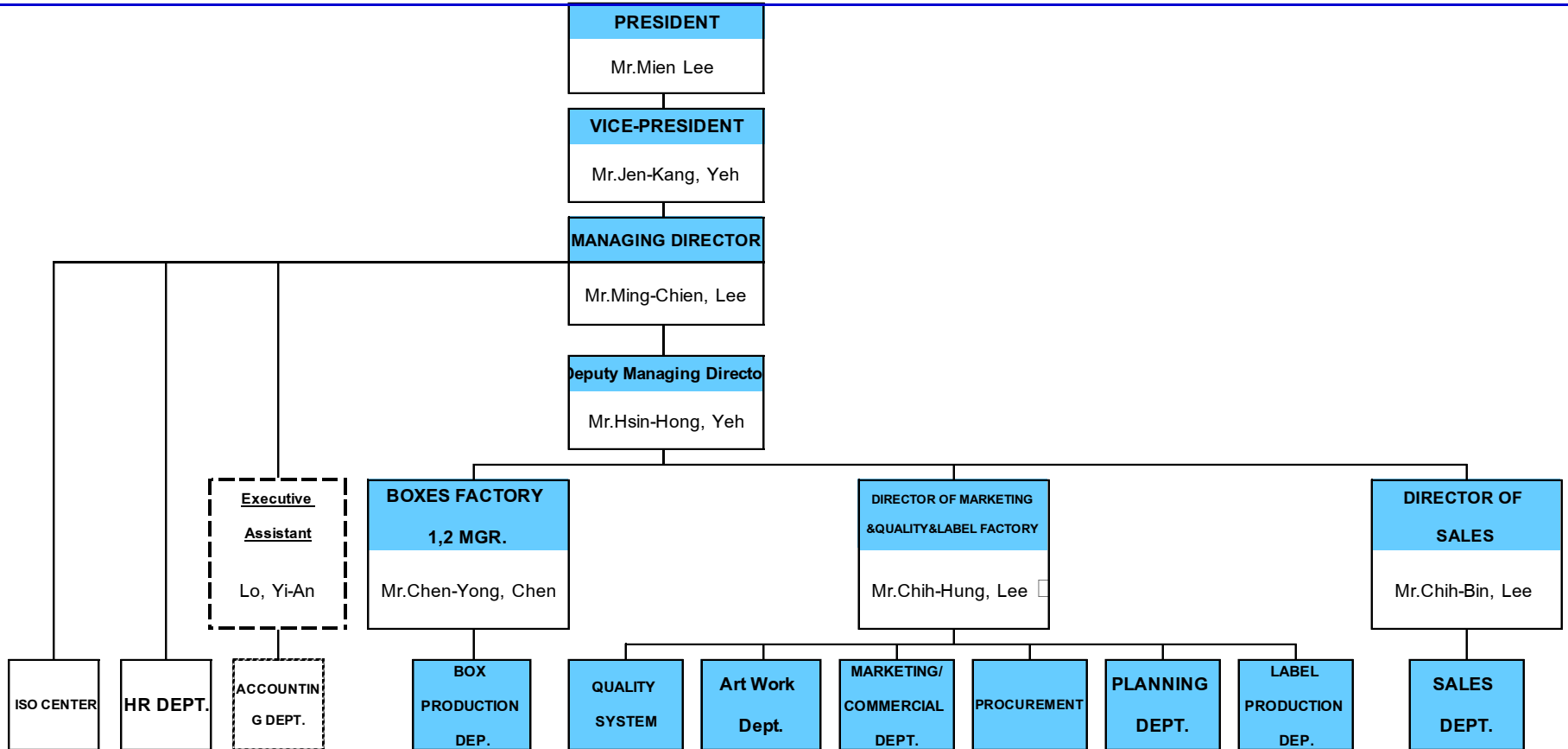
Pre-Press

Press

Post-Press

QA

SKU



End upon line

Reference Customers



Summary



Pre-Press

Press

Post-Press

QA

SKU

SONY

Double A
Double A (1991) Public Company Limited



Panasonic

Certificates & Awards

Summary



Pre-Press

Press

Post-Press

QA

SKU



ISO 9001 / ISO 14001 / GHPs Codex / Supplier & Gov. Awards



1. Prepress Process

1.1 Color Separating Designs with a Computer.

with digital device which has high performance at high level used by skilled and experienced staff.

การแยกสีงานพิมพ์ ด้วยคอมพิวเตอร์
ประสิทธิภาพสูง โดยกราฟฟิกผู้เชี่ยวชาญ
และมีประสบการณ์



***Remark :** Please made file in CMYK and Ai, EPS or PDF format



1.2 CTCP & CTP : Computer To Conventional Plate Machine

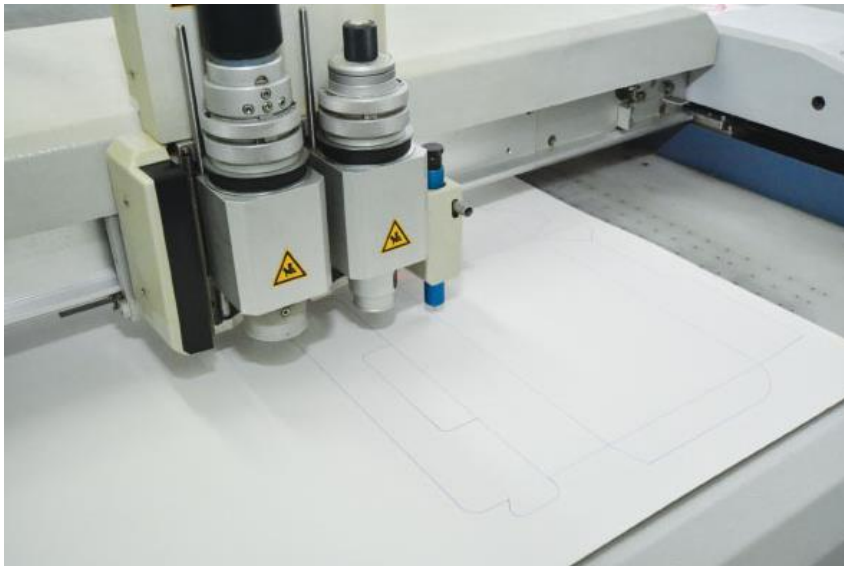


CTCP : Computer To Conventional Plate Machine
is an imaging technology used in modern printing processes.

ออกแม่พิมพ์ด้วยเครื่องจักรที่ทันสมัยระบบ Computer To Plate (CTCP)



1.3 Sample Box



Design Box Machine and support sample before production.

เครื่องตัดกล่องตัวอย่าง (Mock up) ก่อนการผลิต



1.4 Paper Cutter Machine



Roll & Ream Paper Cutter Machine

เครื่องตัดกระดาษแบบม้วน และ รีม



1.5.1 Heidelberg & Mitsu Printing Machines (BOX) 6 Printing Machines & 20+ Pre/Post- Press Machines



- **Maximum Size**

- 41x56 inch (CUT1)

- **Minimum Size**

- 28x40 inch (CUT2)



1.5.2 Printing Machines (Sticker / Label)

10 Printing Machines & 11 + Pre/Post- Press Machines

- **Maximum Size**

- 260 mm. x 460 mm.
- 310 mm. x 350 mm.
 - 810 mm.

Printing Press System (Sticker / Label)

- Polymer Printing
- Flexo Printing
- Offset Printing
- Silk Screen Printing





2. After Press Process

Type of Coating | การเคลือบแบบต่าง ๆ

- ✓ Water Base Matt/ Clear
- ✓ Vanish Matt/ Clear
- ✓ OPP Matt/ Clear
- ✓ UV
- ✓ Calendering
- ✓ Hot Stamping
- ✓ Etc.



3.1 Inspection | กระบวนการตรวจสอบ

Incoming Inspection and In Process Inspection.



- Raw material Inspection,
- COA Report,
- Traceability every lot, and
- Control quality system.

- QC ตรวจสอบคุณภาพวัตถุดิบก่อนรับเข้า
- ตรวจสอบเอกสาร COA
- สามารถตรวจสอบข้อมูลย้อนกลับได้

Inspection Process

Summary

Pre-Press

Press

Post-Press

QA

SKU



3.2 COA & Test Report

RAINBOW PRINTING CO., LTD.
(INSPECTION REPORT)

Customer Name : CAL - COMP Issued date : 15/12/2015
 Part Code : HTS3F20X008 (2.0 SERVICE BOX) Sample : 5 pcs.
 Specification:
 Paper : 420 KP Corrugated : CA125CA125
 Color : 1 Color Printing Coating :
 Size : 108X121X61
 Size Inspection :

No.	Location	Nominal (mm.)	+Tol (mm.)	-Tol (mm.)	Sample 1		Sample 2		Sample 3		Sample 4		Sample 5	
					Actual	Out	Actual	Out	Actual	Out	Actual	Out	Actual	Out
1	W	108	0	0	108	0	108	0	107	-1	108	0		
2		121	0	0	121	0	122	-1	121	0				
3		60	1	0	61	0	61	0	61	0				

Confirmation result:
 OK
 NG

Prepare	Confirm
Date: _____	Date: _____

Certificated Sheet

彩虹印刷股份有限公司 RAINBOW PRINTING CO., LTD.
บริษัท เรนโบว์ ปริ้นติ้ง จำกัด.

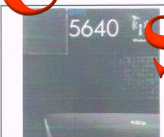
Page : 1 of 1 Page

RUBBING TEST REPORT

Test Report Number : CAL-1409-001 Date of Calibration : 18 September 2014
 Date of issued : 19 September 2014
 Customer : CAL-COMP
 Sample Description : Part Number : HP1MPS5607




Test Result:




Test Environment, Test Method and Equipment Standard :

- ☐ The average ambient conditions at the time of the calibration. During calibration, the measurement was carried out in an ambient temperature of : Temperature 24°C, Humidity 55 %RH
- ☐ Weight 4 lbs, Test 1,000 nds

Date : 19 September 2014 Approved By : 

สำนักงานใหญ่ 48/5 หมู่ที่ 4 ตำบลบึงนาราง อำเภอวังลาย จังหวัดพิจิตร 34000
 16/2 Soi Navamni 11 Yak 4, Navamin, Bangkok, 1023X 48/5 Moo.4 Tambon Tanak, Amphur Muang Chachoengsao, Chachoengsao, 24000
 โทร (Tel) : 02-942-8953-7 โทรสาร (Fax) : 02-938-1034 โทร (Tel) : 038-639-219-18 โทรสาร (Fax) : 038-639-189-7

Confirmed quality by a Certificated Sheet if Customer needs.

จัดทำเอกสารรับรองคุณภาพสินค้าได้ เมื่อลูกค้าร้องขอ



1 Offset Corrugated Box



Benefit

- ✓ Extremely high quality prints
- ✓ Strong
- ✓ More techniques as Calendaring, Coating, UN Spotted and etc.

Application

- ✓ Better appearance & looking
- ✓ Shipping & Transportation usages



2 Offset Folding Box



Benefit

- ✓ Extremely high quality prints
- ✓ Make a paper box is beautiful
- ✓ Improve the brand value

Application

- ✓ Better appearance & looking
- ✓ Applied to any product



3 Full Sticker Label Line



Benefit

- ✓ Expertise in adhesive and appearance
- ✓ Makes an attract the end users
- ✓ Used for product specification, information etc.

Application

- ✓ All Types of Sticker Label
- ✓ Applied to any product



4 Stand / Shelves



Benefit

- ✓ It's ability to stand out of visuals
- ✓ It's carry-easy with light weight
- ✓ More quickly at the eye-level point

Application

- ✓ It's mainly used as commercial usage
- ✓ Fulfill customers' promotional needs.
- ✓ Applied to any product



5 Flexo Corrugated Box



Benefit

- ✓ Extremely high quality prints.
- ✓ Strong

Application

- ✓ Better appearance & looking
- ✓ Shipping & Transportation usages



6 Partition



Benefit

- ✓ High strength
- ✓ Durability
- ✓ Scratch resistance

Application

- ✓ Applied to any paper box



7 Tag



Benefit

- ✓ Used for product specification, information
- ✓ Improve purchase intention of the product from the end user
- ✓ Brand Awareness

Application

- ✓ Clothing
- ✓ Food
- ✓ Beverages etc.

Contact Us

Rainbow Printing Co., Ltd.

marketing@rainbowgroup-thai.com

www.rainbowgroup-thai.com

@RainbowPrinting

RainbowPrinting

Tel. : 02-943-8653-7

Fax : 02-508-1024



Leader Label Co., Ltd.

marketing@leaderlabel.com

www.leaderlabel.com

@LeaderLabel

LeaderLabel

Tel. : 02-508-0520-1,

02-508-0611-13

Fax : 02-508-0618

Address



13.814871, 100.639458

18/2 ซ.นวมินทร์ 111 แยก 4 แขวงนวมินทร์ เขตบึงกุ่ม กทม. 10230

18/2 Nawamin 111 Yeak 4 Nawamin Buengkum Bangkok 10230

Thank You

